

February 2013

## Library Annual Report 2011-2012

### By the numbers...

Public Services	
<b>Library Instruction Classes</b>	153
<b>Number of Students in library instruction classes</b>	4,865
<b>Reference -Transactions</b>	4,326
<b>Circulation - Initial Loans + Renewals</b>	8,000
<b>Reserve - Loans</b>	1,400
Collections	
<b>Print Volumes</b>	56,615
Digital Resources	
<b>Number of E-journals</b>	49,300
<b>Number of Electronic Serial Titles - Included in aggregator packages</b>	85,145
<b>Number of E-books</b>	93,320
<b>Number of streaming videos</b>	13,317
Activity	
<b>Annual Gate Count (North Oshawa/Whitby)</b>	480,145
<b>Hours open per week</b>	94

In 2011-12 fiscal year Durham College statistics reported only. Previous year's totals included UOIT numbers with the exception of electronic resources.

### Year in Review

Highlights of the past year include:

- ⇒ Opened Whitby Library in September 2011 to support programs at Whitby Campus;
- ⇒ Added over 2,100 Durham College new print books and other physical items to the collection;
- ⇒ Increased the number of digital resources to 93,320 e-books, 49,300 e-journals and 85,145 electronic serial titles, and 13,312 streaming videos;
- ⇒ Conducted over 150 instructional classes for 4,865 Durham College students;
- ⇒ Library visits rose from 461,975 in 2010-11 to 480,145 in 2011-12;
- ⇒ Developed library strategic planning to enhance library service delivery to campus community;
- ⇒ Launched content-rich resource guides (LibGuides) and web pages for improved navigation;
- ⇒ Increased access to streaming video collections with addition of MARC records to the catalogue and a LibGuides searchable video page;
- ⇒ Supervised field placements for Durham College and Seneca library science students as well as, placements for public relations, and marketing students;
- ⇒ Offered extended hours for the April and December exam periods.

## Year in review

### Whitby Library Opens its Doors

Since opening its doors in September 2011, Whitby Library has achieved the following milestones:

- ⇒ A three-fold increase in library attendance;
- ⇒ 300% increase in physical material in the library, since the start of the 2011-2012 academic year;
- ⇒ Over 78,000 electronic books and streaming media made available to Whitby students;
- ⇒ Numerous standards and code books made available online;



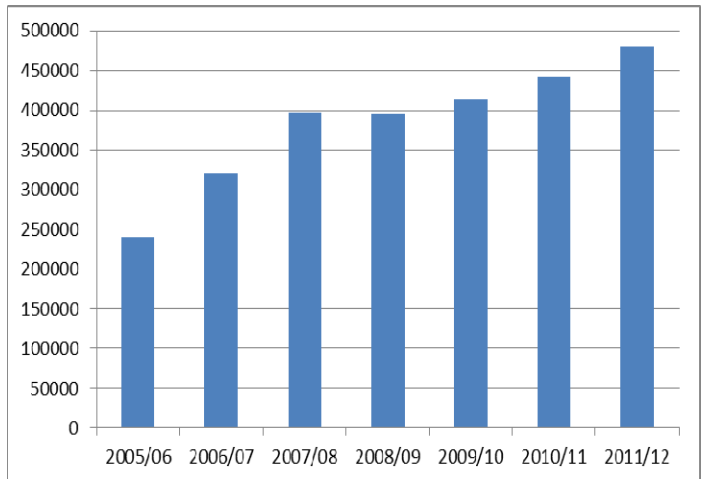
- ⇒ Purchase of new subscriptions of several media packages, allowing for additional online access;
- ⇒ A field placement opportunity for a Durham College public relations student supervised at the library.

“As Whitby progresses to becoming a full-service campus, I am deeply thankful to the presence and support of our new library,” -  
Faculty

### Access Services

Campus Library locations continue to be very popular places for students, faculty, and staff.

The chart below illustrates the growth in the number of annual visits to the Libraries. Between 2005/06 and 2011/12 there has been an 101% increase in traffic!

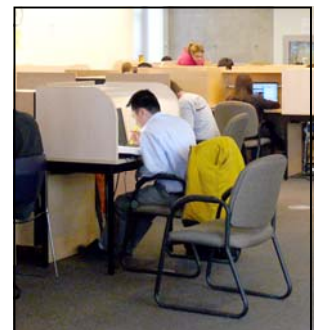


In 2011/12 the entire circulating collection at the North Oshawa Library location was reorganized to improve accessibility, and the Whitby Library opened providing on site access to library material at the Whitby Campus.

#### Total Durham College Circulation Transactions

9,406

Access Services department also ensures patrons have space and seating conducive to studying in the library. Monthly building census activities help to determine how best to meet the needs of the students, faculty, and staff using the library. In 2011/12 we continued to replace the less popular arm chair seating with highly coveted single study desk space.



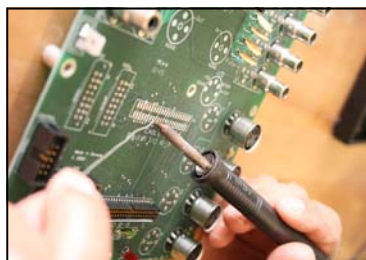
# Year in review

## New Electronic Additions

In recent years many new databases and e-books have found their way into the Durham College Library collection. Coinciding with the opening of the Whitby library corner in August 2011, this was especially the case. To support courses currently offered at this campus and/or designated for relocation in the immediate future, the Library began several new online subscriptions:

### Access Engineering

*Access Engineering:* over 300 e-books from 14 engineering and related fields



### IEEE ASPP (Institute of Electrical and Electronics Engineers – All Society Periodicals Package)

Full text of IEEE journals, transactions and magazines 2005 to present.

While the print volume is still exceedingly important, today's students are apt to visit their Library virtually before they step foot in the door; making a first impression with a strong electronic collection is crucial.

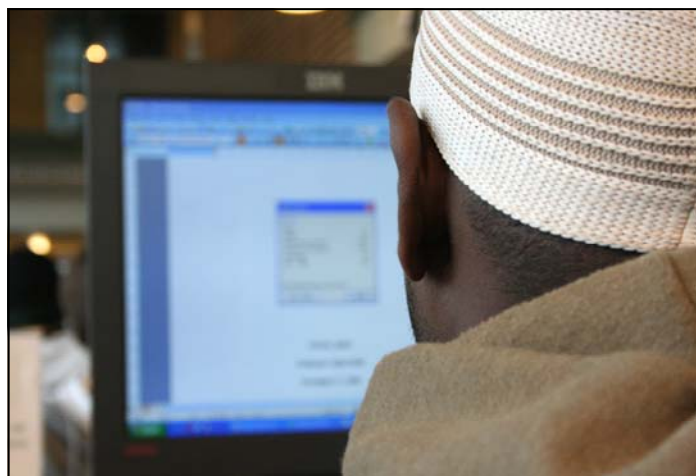
Carol Mittlestead  
Associate Librarian for Collections



### Energy and Power Source

Journal articles focusing on coal, electric power, natural gas, nuclear power,

petroleum, renewable energy (including hydroelectric power, wind power, solar power, alternative fuels)



### Food Science Source

Food industry publications addressing product development, processing, packaging, safety, and culinary arts and customer service



*"It is a wonderful thing doing research, from research comes understanding, from understanding past research comes new applications and uses. It is not a luxury but a great investment in our future."*

*George A. Olah, 1994 Nobel Laureate in Chemistry, Founding Director of the USC Loker Hydrocarbon Research Institute.*



## Year in review

### Group Study Rooms



The North Oshawa Library has 10 group study rooms which are immensely popular. This year usage by Durham College students totalled 1,525 hours.



"...the library folks are so helpful. What more could you want?"

- Student

### Celebrating Library Student Workers!

A big thank you to the following Durham College and UOIT Library student workers for their part in making this a successful year!

**Emma Altpeter**

**Valerie Coish**

**Rachel Daize**

**Trisha Elder**

**Shelly Kowalski**

**Elisa Kritiotis**

**Taylor McKay**

**Jessica  
Montaque**

**Carrie  
Thompson**

**Kaylan Szuch**



### Gifts and Donations

Many thanks to all the faculty, staff and community members who so have so kindly donated books and journals to the library. Your generous support is appreciated.